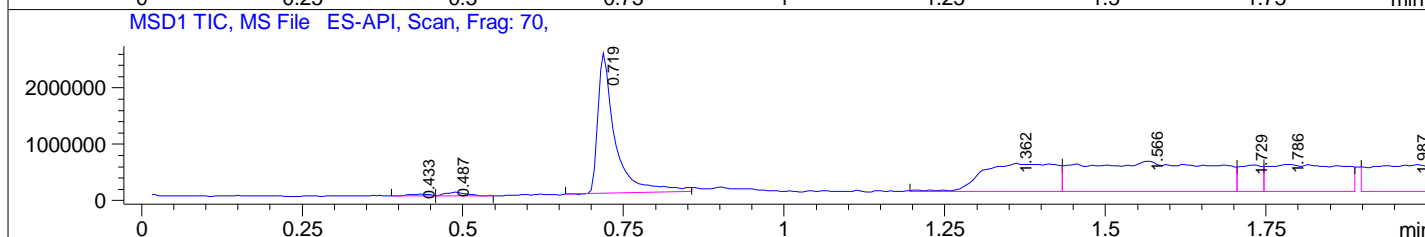
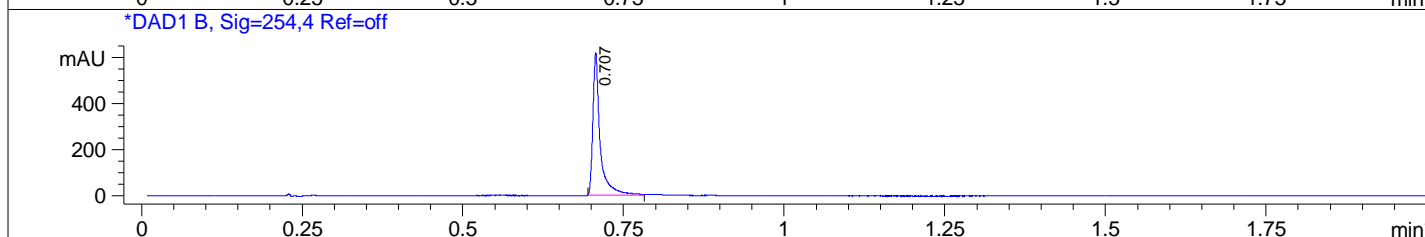
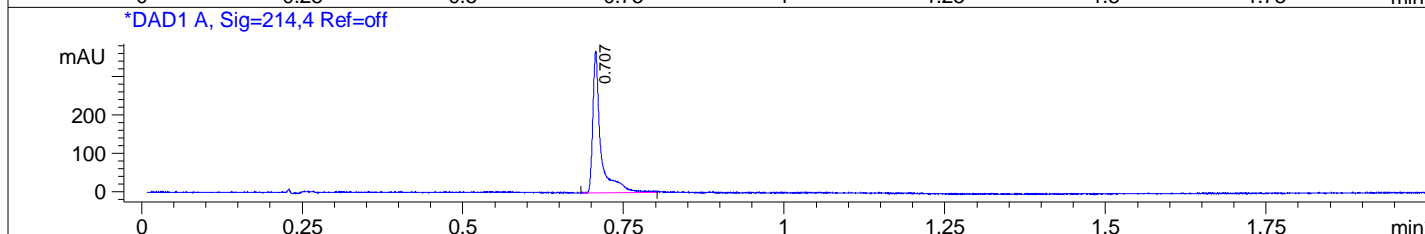
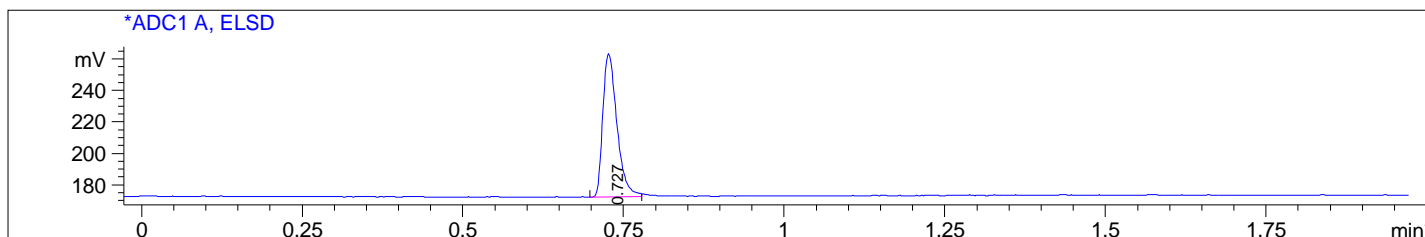


File D:\DATA\T159\MONITOR\CP-0001-07130-LCMSA022.D
 Injection Date : 5 Mar 13 2:49 pm +0800 Tgt Mass(EZX) :
 Sample Name : CP-0001 Location : P2-B-03
 Acq. Operator : T159-Monitor Inj : 1
 Spec. Reported : MS Integration Inj Volume : 0.7 ul
 Acq. Method : C:\Chem32\1\METHODS\1-POS-2MIN.M
 Analysis Method : C:\Chem32\1\METHODS\1-POS-2MIN.M
 Sample Info : Easy-Access Method: '1-POS-2MIN'
 Method Info : Mobile Phase: A: Water(0.01%TFA) B: ACN(0.01%TFA)
 Gradient: 5%B increase to 100%B within 0.8min,100%B for 1.1min.
 Flow Rate:1.5mL/min
 Column: Chromolith Fast Gradien RP-18e,50-3mm.
 Column Temperature: 40C
 Mass Range:100-1000



Integration Results for ADC1 A, ELSD

RetTim	Width	Area	Height	Area%
0.73	0.02	137.56	91.02	100.00

Integration Results for DAD1 A, Sig=214,4 Ref=off

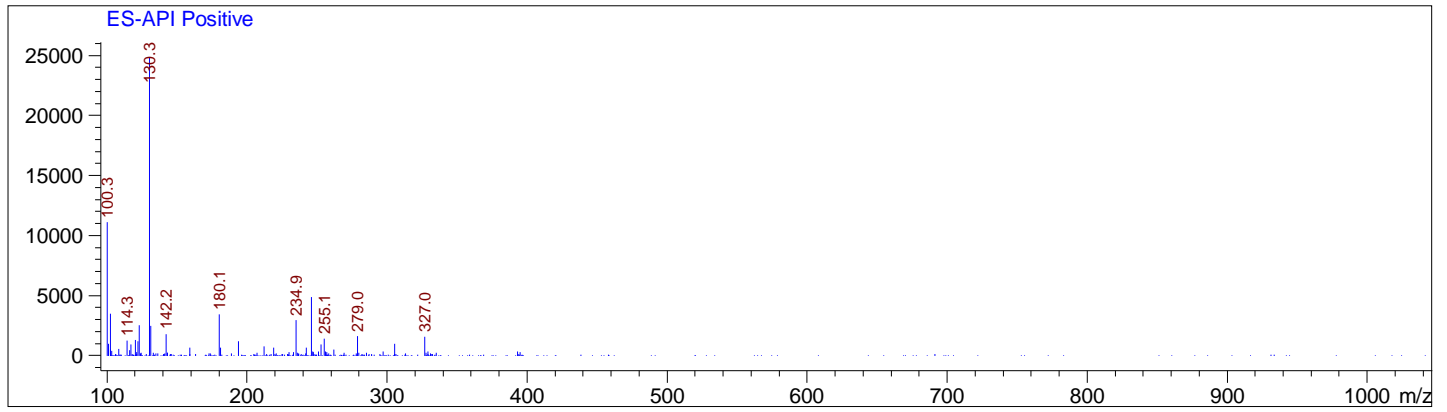
RetTim	Width	Area	Height	Area%
0.71	0.01	321.54	368.89	100.00

Integration Results for DAD1 B, Sig=254,4 Ref=off

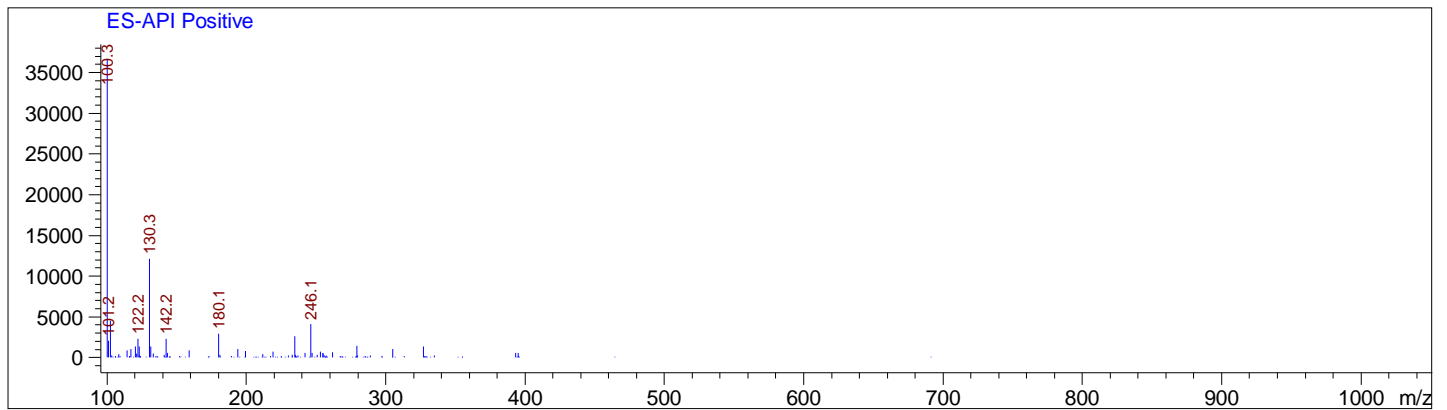
RetTim	Width	Area	Height	Area%
0.71	0.01	492.17	613.70	100.00

Ret. Time: 0.43

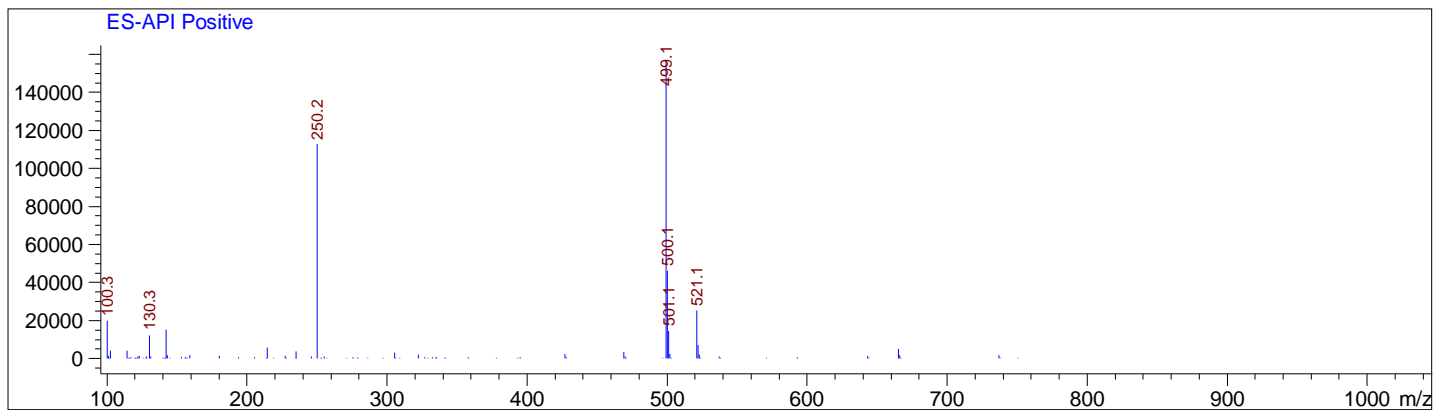
<<<< POSITIVE SPECTRA >>>>



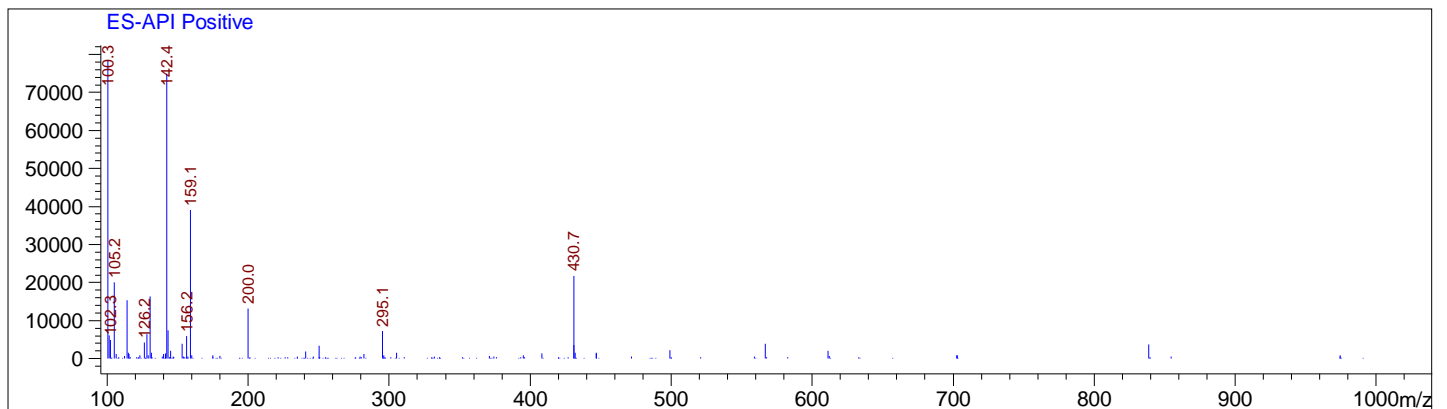
Ret. Time: 0.49



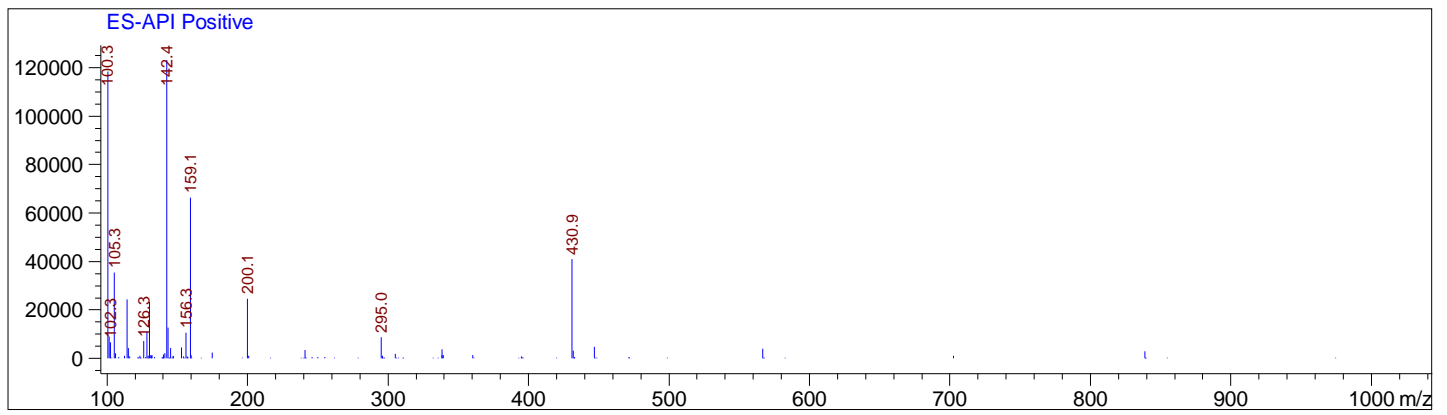
Ret. Time: 0.72



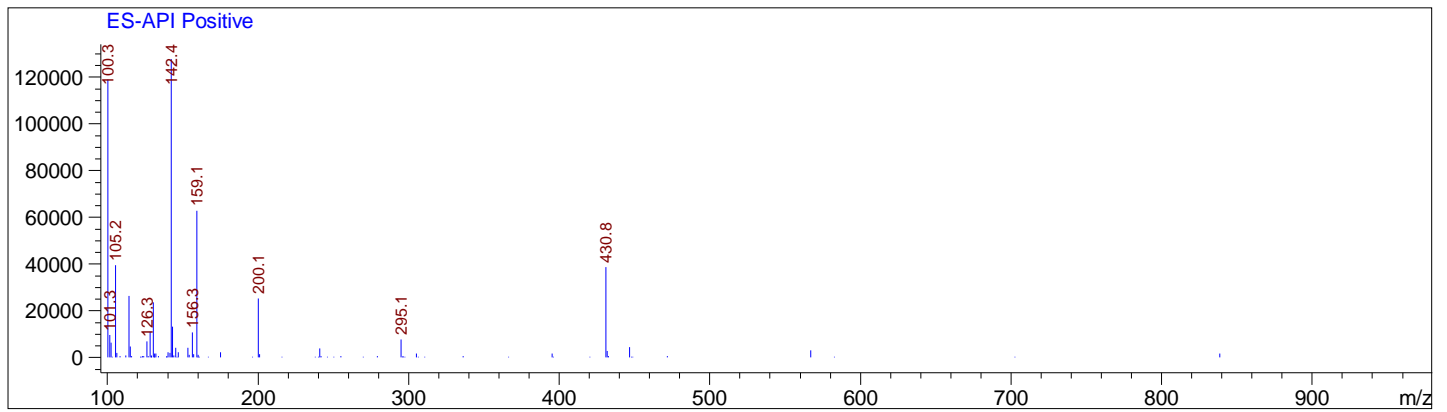
Ret. Time: 1.36



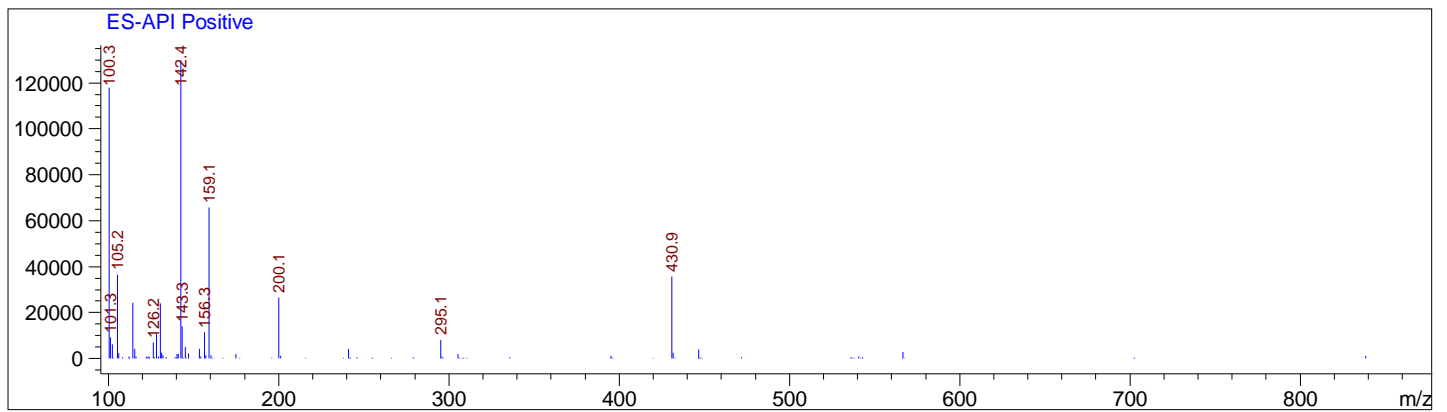
Ret. Time: 1.57



Ret. Time: 1.73



Ret. Time: 1.79



Ret. Time: 1.99

